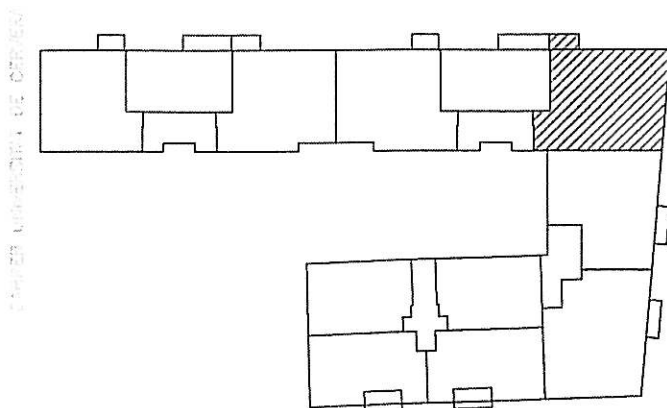
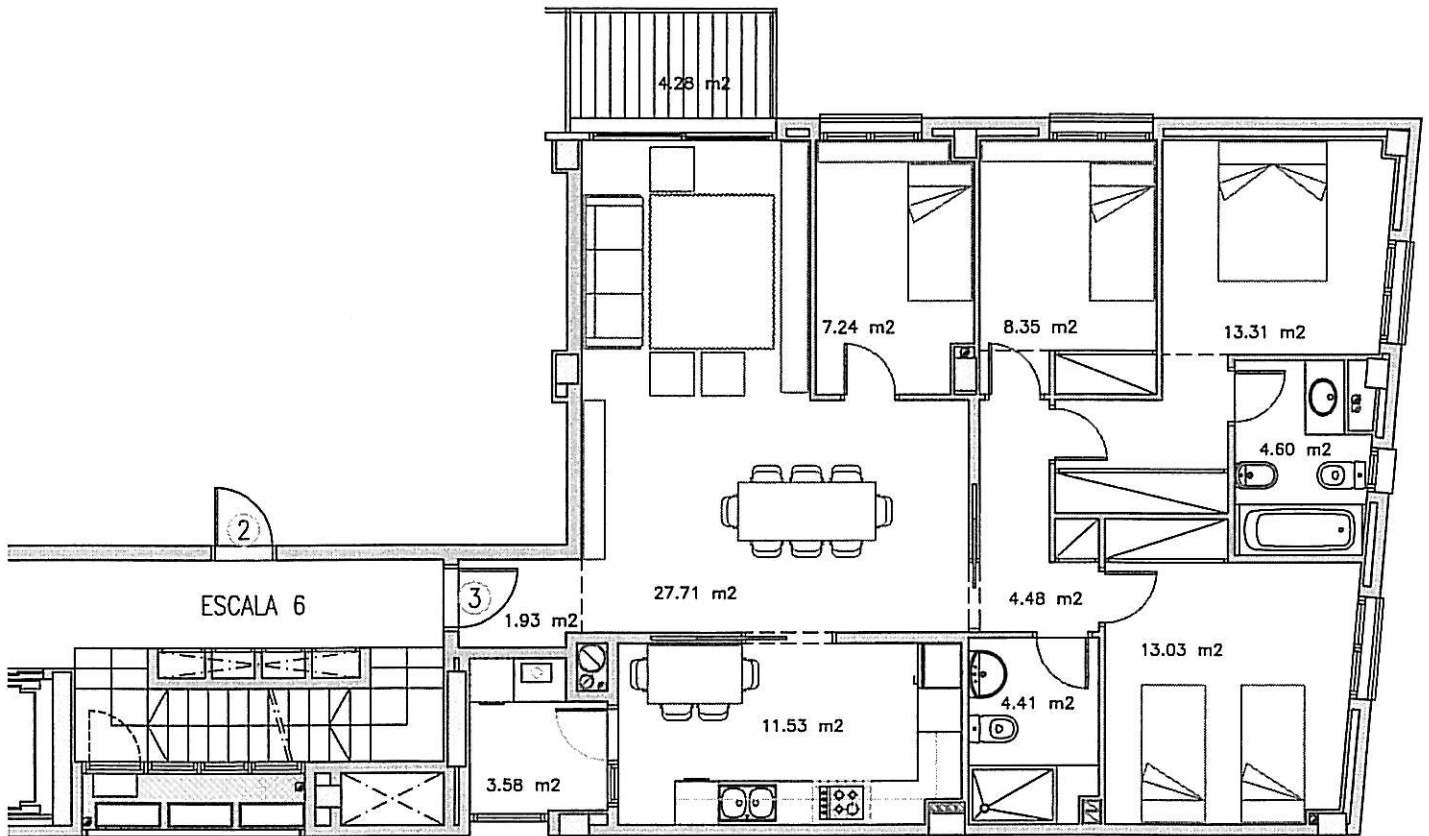


LES CASERNES — GIRONA

HABITATGE TIPUS U. P. 3

ESCALA (6) PLANTA (2) PORTA (3)

SUP. CONSTRUIDA.....133.57 m2.



SUPERFICIE CONSTRUIDA	116.29 m2
SUP. ZONES COMUNS	13.00 m2
SUP. TOTAL CONSTRUIDA	129.29 m2
TERRASSES	4.28 m2
TOTAL	133.57 m2